

Question 2:

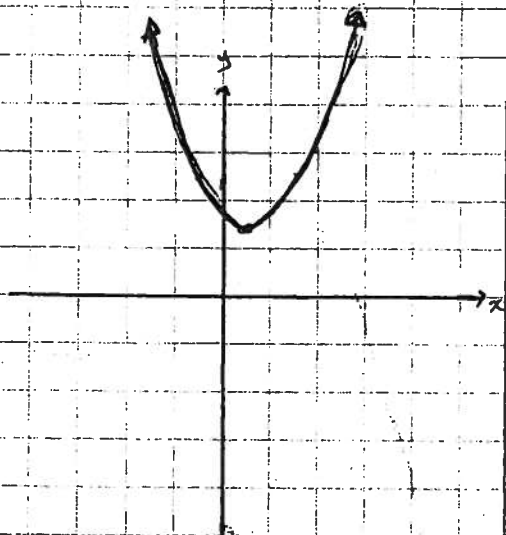
Functions  $f_1$  and  $f_2$  are defined as follows:

$$f_1(x) = ax^2 + b_1x \quad \text{where} \quad a < 0 \quad \text{and} \quad b_1 > 0$$

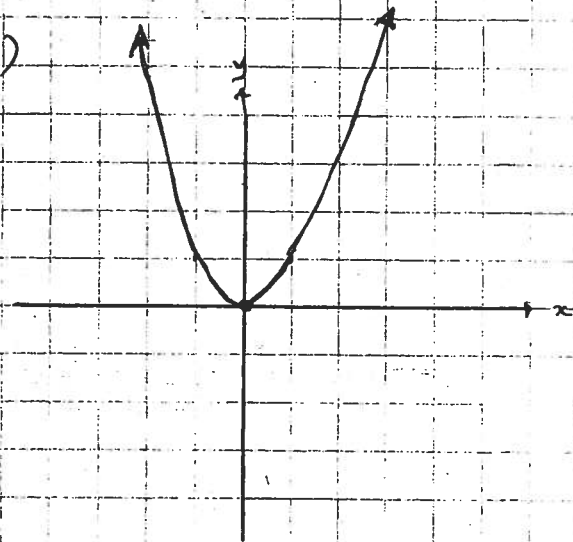
$$f_2(x) = b_2 \quad \text{where} \quad b_2 = -a$$

Which one of the following graphs could represent  $(f_2 - f_1)(x)$ ?

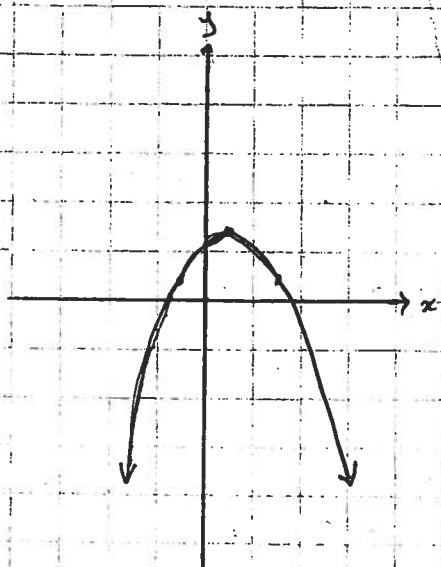
a)



b)



c)



d)

